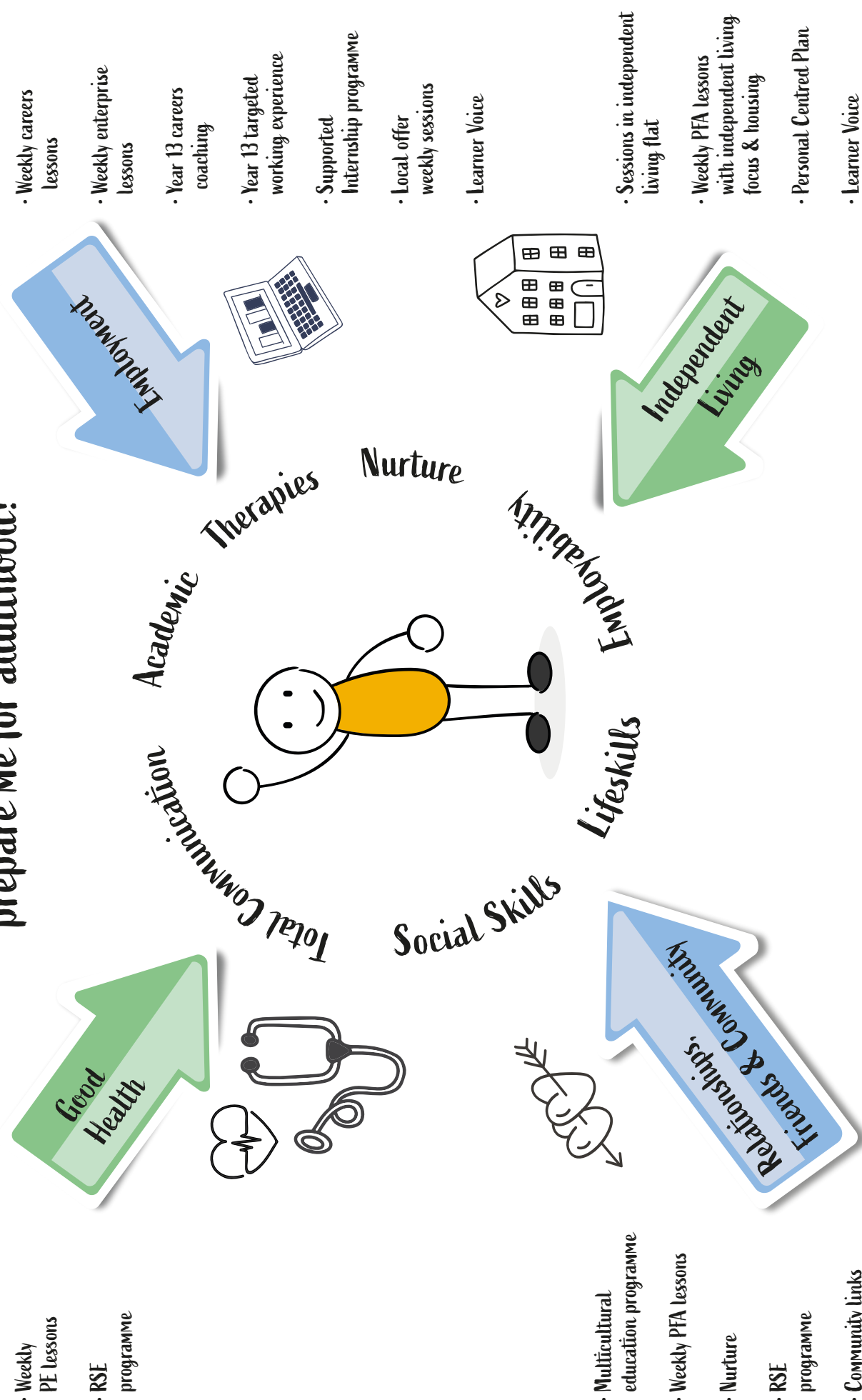




14-19 Options Booklet

Pathway A

How does Kennel Lane School prepare me for adulthood?



Formal Curriculum - Pathway A

Kennel Lane School 14 – 19 Curriculum

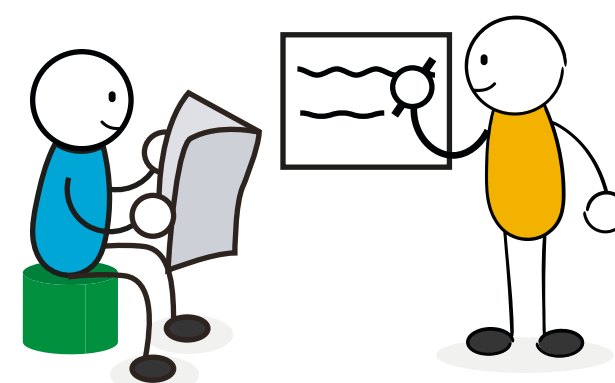
Welcome to the 14-19 Options process. This leaflet contains information about the courses we offer at Kennel Lane School. We hope you will find it useful in helping you to support your young person to make their choices for the forthcoming academic year.

Kennel Lane School offers Pathways for learners that are specifically matched to courses that are on offer at the local College (Bracknell and Wokingham) as well as career options that may interest learners who have chosen that pathway.

Pathways are made up of mandatory classes, these are broken up into Core Learning and their Pathway Learning.

1. English & Literacy

CORE LEARNING



Your young person will study a range of age-appropriate novels, plays, poems and non-fiction which is taught over half-termly or termly themed units. All strands of English are covered: Reading, Writing and Speaking, Listening and Communicating.

Your young person will be working towards an English Functional Skills accreditation, the content is relevant to the workplace and provides a foundation for progression to employment and further education. It will also help your young person develop skills for everyday life.



Your young person will follow the Read Write Inc. programme alongside this accreditation. Read Write Inc. is a programme that provides a cohesive and creative approach to teaching learners to read, write and spell. Some learners, where appropriate, will access Literacy and Language. This is a programme which aims to develop a love and interest in literature.

Accreditation

Exam Board: WJEC

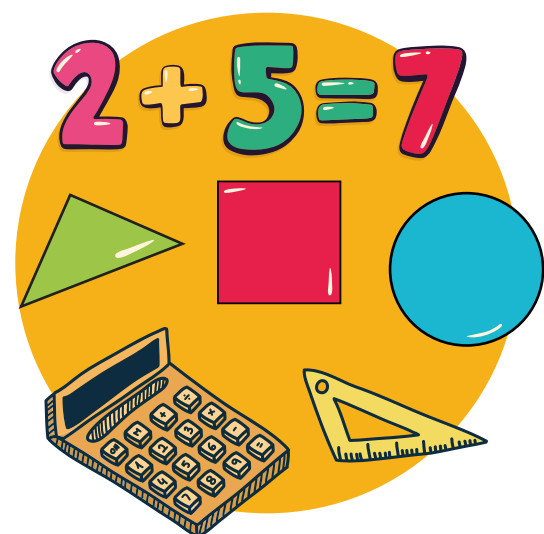
WJEC Entry Pathway - Learners can achieve either an award or certificate at Entry 2 or 3 depending on ability.

Exam Board: Edexcel

Functional Skills English – Learners can achieve Entry 1, Entry 2, Entry 3 or Level 1 depending on ability.

2. Maths and Numeracy

CORE LEARNING



Maths lessons have a practical focus and your young person will be working towards a Maths Functional Skills accreditation. The content is relevant to the workplace and provides a foundation for progression to employment and further education. It will also help your young person develop skills for everyday life.

The curriculum has three broad topics:

Using Number and the number system
Using common measures, shape and space
Handling information and data

The Numicon approach is used to support your young person's understanding of Number across the school. Through the multi-sensory activities and mathematical language of Numicon, your young person will develop the understanding and skills that underpin their later understanding of number.

Accreditation

Exam Board: WJEC

WJEC Entry Pathway - Learners can achieve either an award or certificate at Entry 2 or 3 depending on ability.

Exam Board

Edexcel

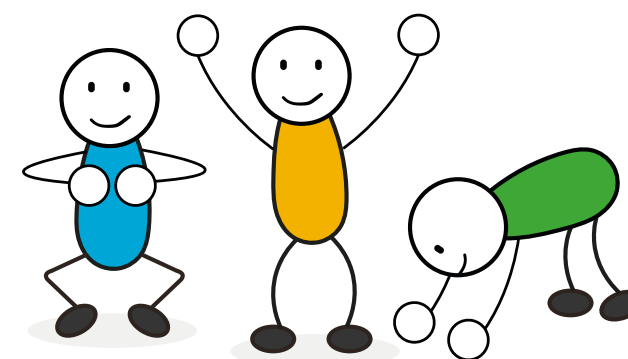
Functional Skills Maths – Learners can achieve Entry 1, Entry 2, Entry 3 or Level 1 depending on ability.

Employability Skills

- Problem solving
- Money skills
- Time management

3. Physical Education

CORE LEARNING



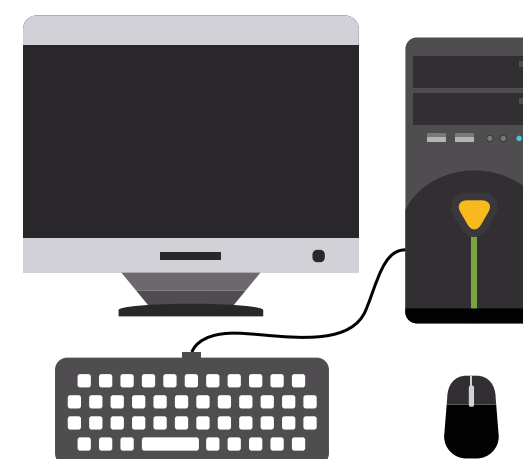
The PE curriculum for your young person is broad based and consists of a range and variety of sports and games.

Many activities will be school based but some will be off-site at specific sports venues through our good links with other schools and clubs. We will continue to take part in county wide tournaments to maintain a competitive element within the curriculum..

Employability Skills

- Leading a team
- Working within a team
- Communicating with others
- Problem solving
- Helping others

4. Computing



The Computing curriculum is tailored to the needs and ability of learners. Information and communication technology is embedded in the curriculum as a key skill the same as literacy and numeracy. Your young person will use technology to record experiences, explore possibilities and to try out new ideas enabling them to be able to use, express themselves and develop ideas as digitally literate users.

Your young person will also study the way in which computers are used in society and will learn to use computers to solve problems and present their findings. Functional Skills ICT will allow your young person to develop the skills to operate ICT confidently, effectively and independently in education, work and everyday life. Your young person will also be taught how to stay safe online through e-safety lessons that link with the PSHCE curriculum.

Accreditation

Exam Board: Edexcel

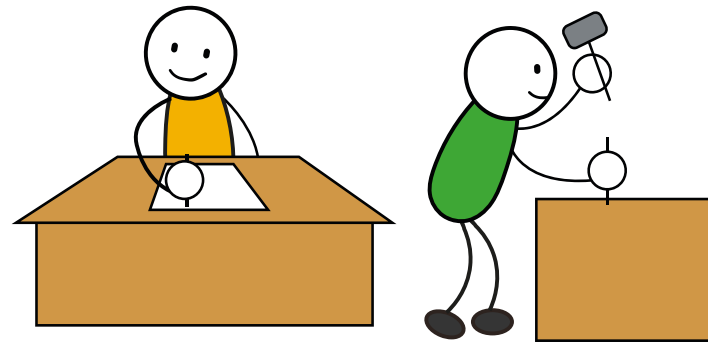
Functional Skills ICT Learners can achieve Entry 1, Entry 2, Entry 3 or Level 1 depending on ability.

Employability Skills

- Computer skills
- Communicating with others
- Problem solving

5. Vocational Learning

CORE LEARNING



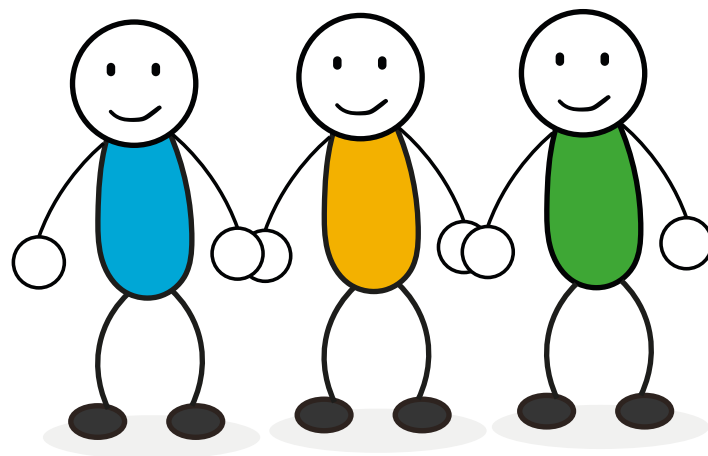
Our aim is that your young person in Year 13 will be offered taster courses at a local college depending on their interests and ability in order to prepare them for Life After Kennel Lane School.

Bracknell and Wokingham College offers learners experiences of what it is like at college by joining their leisure options one afternoon a week.

We believe offering a taster course in Year 13 will allow your young person time to choose the right college placement before entering Year 14. Once your young person has made applications to colleges or work placements, we will liaise with colleges/work placements to set up transition days.

Your young person will be offered Work Experience in Year 13 which will match their needs and interests. Kennel Lane School works closely with local businesses to offer learners a range of different work experiences.

6. Relationships, Sex and Health Education



This is a planned developmental programme of learning to help your young person manage their lives now and in the future. It deals with real life issues which affect young people, their families and their communities, and engages with the social and economic realities of their lives, experiences and attitudes.

Our Secondary curriculum covers personal wellbeing, economic wellbeing, social and health education including relationship and sex education as well as the social and emotional aspects of learning.

Accreditation

Exam Board: WJEC

Personal and Social development - Learners can achieve either an award or certificate at Entry 2 or 3 depending on ability.

7. Religious Education

CORE LEARNING



We are working with Bracknell Forest Local Authority to ensure the locally agreed syllabus is delivered at Kennel Lane School. Rather than being taught as a discreet subject, Religious Education will be taught through a rich cultural programme and assemblies.

8. Careers



The Careers programme aims to increase the awareness, possibility and probability of paid employability.

The goals of this programme are to; increase understanding about what it means to work, be encouraged to think more about work as a possibility, plan for work as a career goal, get ready for working, rehearse being at work and gain relevant experience in a working environment.

Within KS4 and KS5 learners have one careers lesson a week.

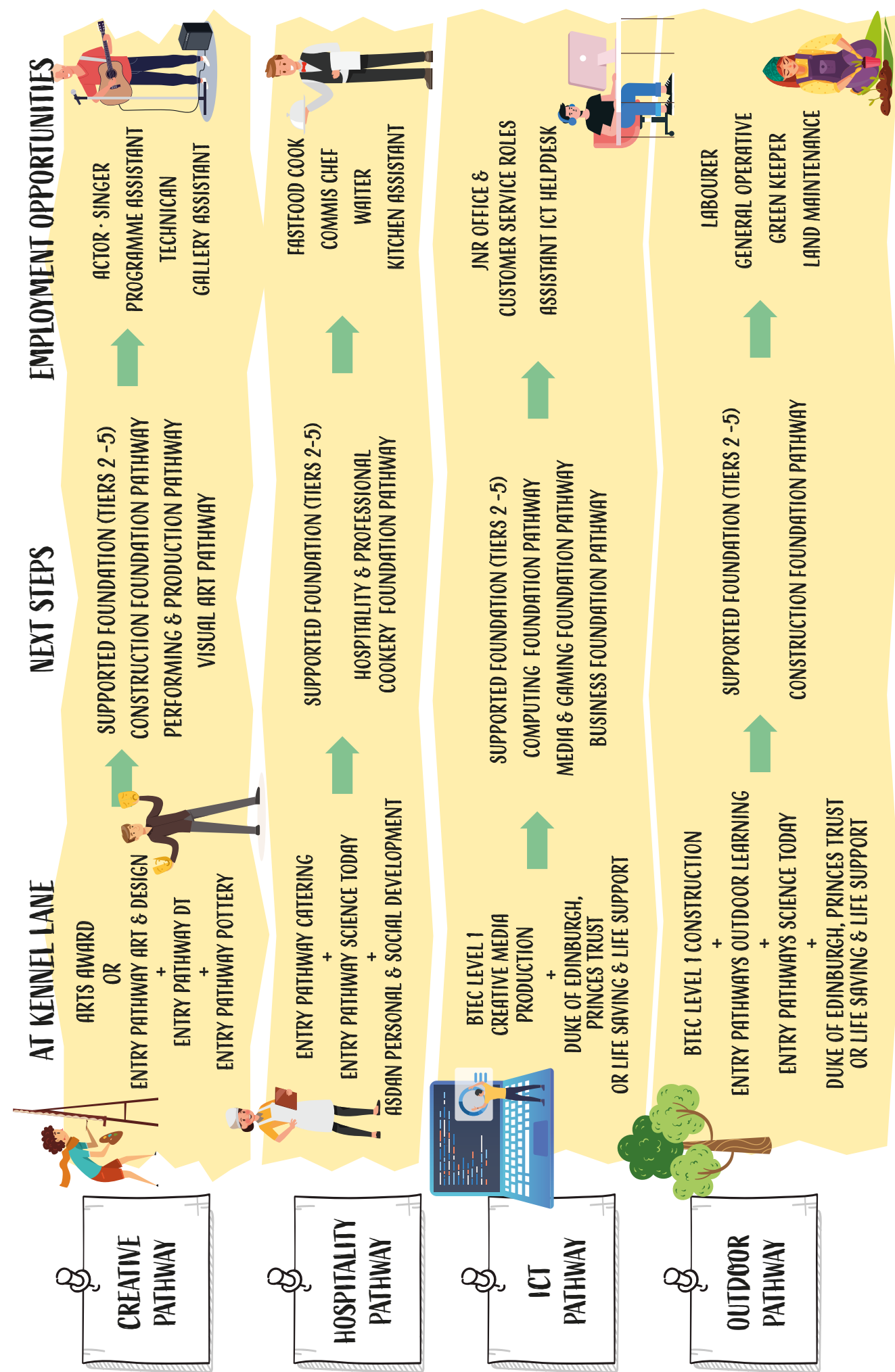
Enterprise Project

When in KS5, your young person will have the opportunity to contribute to the business Green Leaves to enhance their working experiences.

Transition

During Year 13, your young person will have career coaching and the chance to explore different options post Kennel Lane School. They will be supported when moving to their next phase of education or employment. Class teams will work closely with colleges and work placements to organise taster days and observations.

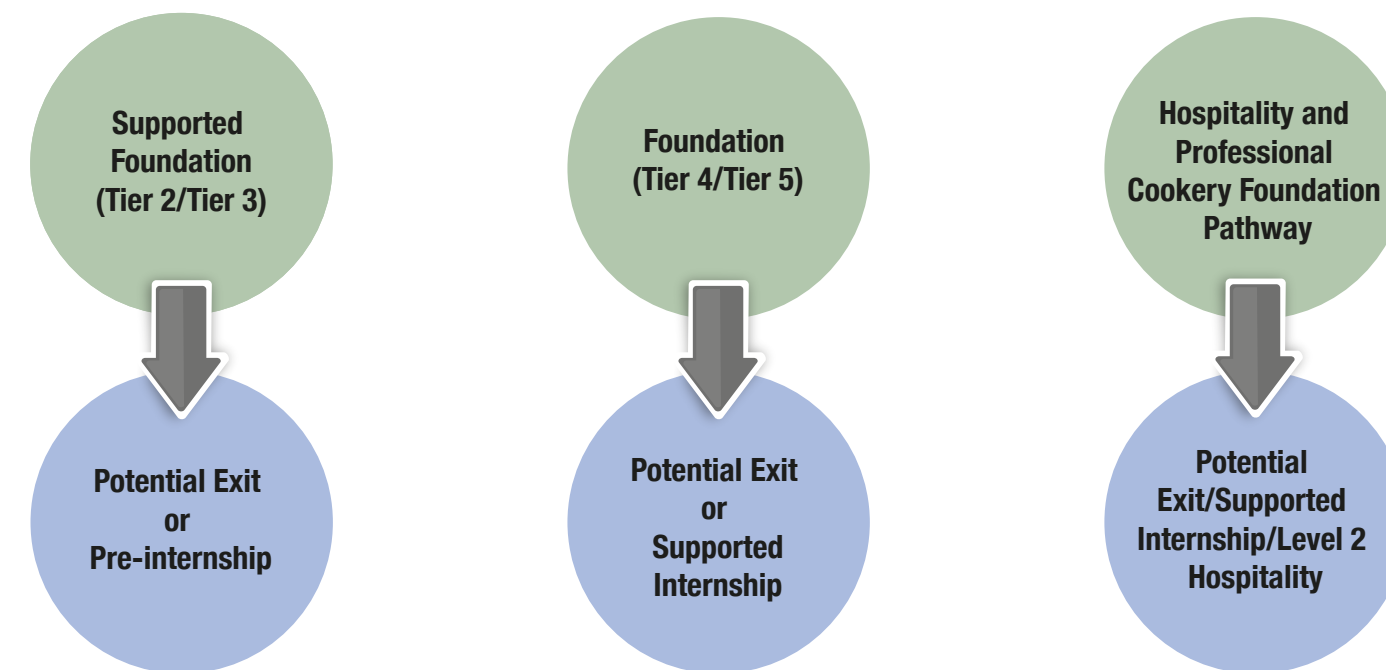
14-19 VOCATIONAL PATHWAYS



1. Hospitality Pathway

PATHWAY CHOICES

(Learners on the Hospitality Pathway will follow BOTH courses below).
Linked College Courses at Bracknell and Wokingham College



Potential Job Roles

Traineeship (may be unpaid) Fast Food cook/ Commis Chef/Waiter/Kitchen Assistant/Apprenticeship
Potential Supported Internship roles within a kitchen environment.



Entry Pathways Catering

This course gives your young person the chance to develop an understanding of the world of work and working in the Catering industry. Young people will learn about:
Food and health, Health, safety and hygiene, Food preparation, The hospitality industry, Serving food and drink and Customer Service.

Accreditation

Exam board: WJEC
Preparing for work - Learners can achieve either Entry 2 or Entry 3 depending on ability.

Employability Skills

- Time management
- Creative thinking
- Problem solving



Entry Pathways Science Today

This course is designed to ensure your young person gains a grasp of some important concepts whilst being presented in an interesting way. This qualification in Science enables learners to:

acquire a body of basic scientific knowledge and an understanding of some important scientific ideas;
develop basic experimental and investigative abilities;
develop a basic understanding of some applications of science in everyday life; develop literacy, numeracy and ICT skills.

Accreditation

Exam Board: WJEC

Science Today - Learners can achieve either Entry 2 or Entry 3 depending on ability.

Employability Skills

- Problem solving
- Creative thinking
- Time management
- Communicating with others

Enrichment



Personal and Social Development (PSD)

This qualification offers imaginative ways of supporting your young person in:
becoming a confident individual who is physically, emotionally and socially healthy;
being a responsible citizen who makes a positive contribution to society and embraces change; manages risk together with their own wellbeing as well as introducing them to new activities and personal challenges.

Accreditation

Exam Board: ASDAN

Science Today - Learners can achieve either Entry 1, Entry 2, Entry 3, Level 1 depending on ability.

Your young person will also get the opportunity to develop their hospitality skills in our new social skills area. They will be able to practice skills such as preparing and serving food, basic cleaning and laundry skills in a practical real life setting.

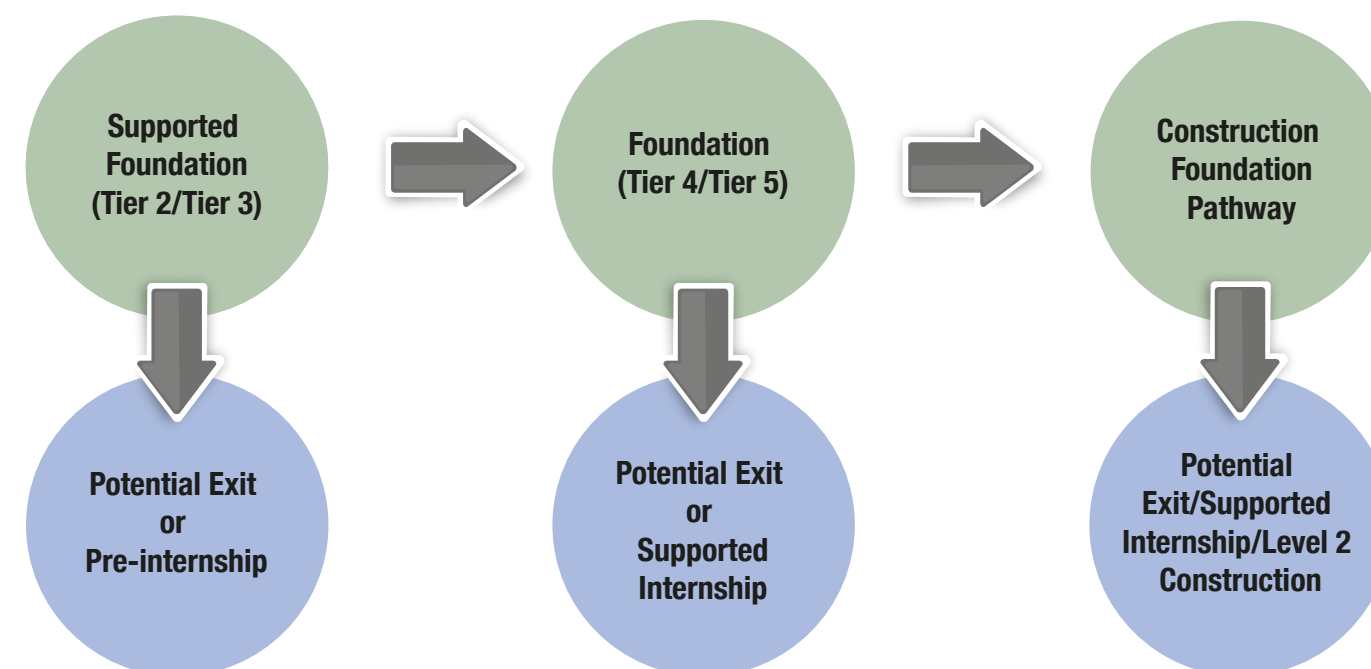
Employability Skills

- Communicating with others
- Decision making
- Problem solving

2. Outdoor Learning Pathway

PATHWAY CHOICES

(Learners on the Outdoor Learning pathway will cover BOTH courses below)



Potential Job Roles

Traineeship (may be unpaid) Labourer, General Operative, Apprenticeship
Potential Supported Internship roles within an outdoor environment



Entry Pathways Outdoor Learning

This course gives your young person the chance to develop an understanding of the world of work and working with others in the outdoor environment.

Learners will have the opportunity to take ownership of a raised bed or an area of the school garden where they will grow a choice of vegetables and flowering plants. Learners will grow plants from seeds and cuttings in poly-tunnels and make artefacts to enhance the colour/texture of the garden. Learners will have an introduction to plant care and land maintenance. Learners will also sell produce through our school company Green Leaves.

Accreditation

Exam board: WJEC

Preparing for work - Learners can achieve either Entry 2 or Entry 3 depending on ability.

Employability Skills

- Leading a team
- Working within a team
- Time management
- Communicating with others
- Problem solving

AND



Entry Pathways Science Today

This course is designed to ensure your young person gains a grasp of some important concepts whilst being presented in an interesting way.

This qualification in Science enables learners to:

- acquire a body of basic scientific knowledge and an understanding of some important scientific ideas;
- develop basic experimental and investigative abilities;
- develop a basic understanding of some applications of science in everyday life;
- develop literacy, numeracy and ICT skills.

Accreditation

Exam board: WJEC

Preparing for work - Learners can achieve either Entry 2 or Entry 3 depending on ability.

Employability Skills

- Leading a team
- Working within a team
- Time management
- Communicating with others
- Problem solving

Enrichment

AND either;



Duke of Edinburgh

The programme runs on a two year cycle and covers different sections each year.

To achieve the Duke of Edinburgh Award, young people must complete four sections:

Volunteering: making a difference to the local community by clearing rubbish and planting trees;

Physical: achieving greater physical fitness through participation in sport;

Skill: developing practical and social skills and personal interests

Expedition: working as a team, carrying clothing and equipment for two days (Bronze).

Accreditation

Duke of Edinburgh Award Bronze

Employability Skills

- Leading a team
- Working within a team
- Problem solving
- Communicating with others

OR



Prince's Trust

Princes Trust

This year, Prince's Trust has launched the Achieve Programme. This new programme offers that extra little bit of support to prepare our young people for the world of work. In addition to supporting young people to succeed, Achieve creates a stepping stone to embedding Literacy, Language and Numeracy.

The Achieve programme is uniquely designed to help young people engage with education, using a flexible modular structure. Our young people get the opportunity to take part in a network of corporate partners and engaging workshops.

Achievement

- Opportunity to undertake a robust qualification in Personal Development and Employability skills.
- Emphasis on careers and preparation for work.

Support

- Safe, informal environment to build positive relationships.
- Clear resources to meet our young people's needs.

Flexibility

- Tailored curriculum relevant to young person's needs.
- A wide range of topics.

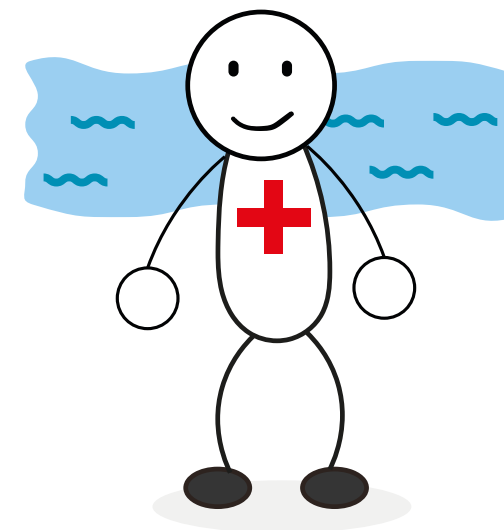
Personal Development

- Opportunity to develop personal and interpersonal skills.
- Young people are encouraged to make decisions and lead activities.

Employability Skills

- Leading a team • Working within a team • Problem solving • Communicating with others

AND



Life Saving and Life Support

The Lifesaving programme has been developed by the RLSS. The programme we are working towards is 'The Survive and Save' programme. Learners choosing the lifesaving option will learn key life skills including the importance of safe practice around water; from baths, paddling pools and swimming pools to rivers and seas. Learners will improve their technical swimming ability and stamina in the water. These developed skills could lead to the opportunity to participate in other water based sports. For example, some of our current students have recently achieved the PADI Level One Scuba Diving qualification.

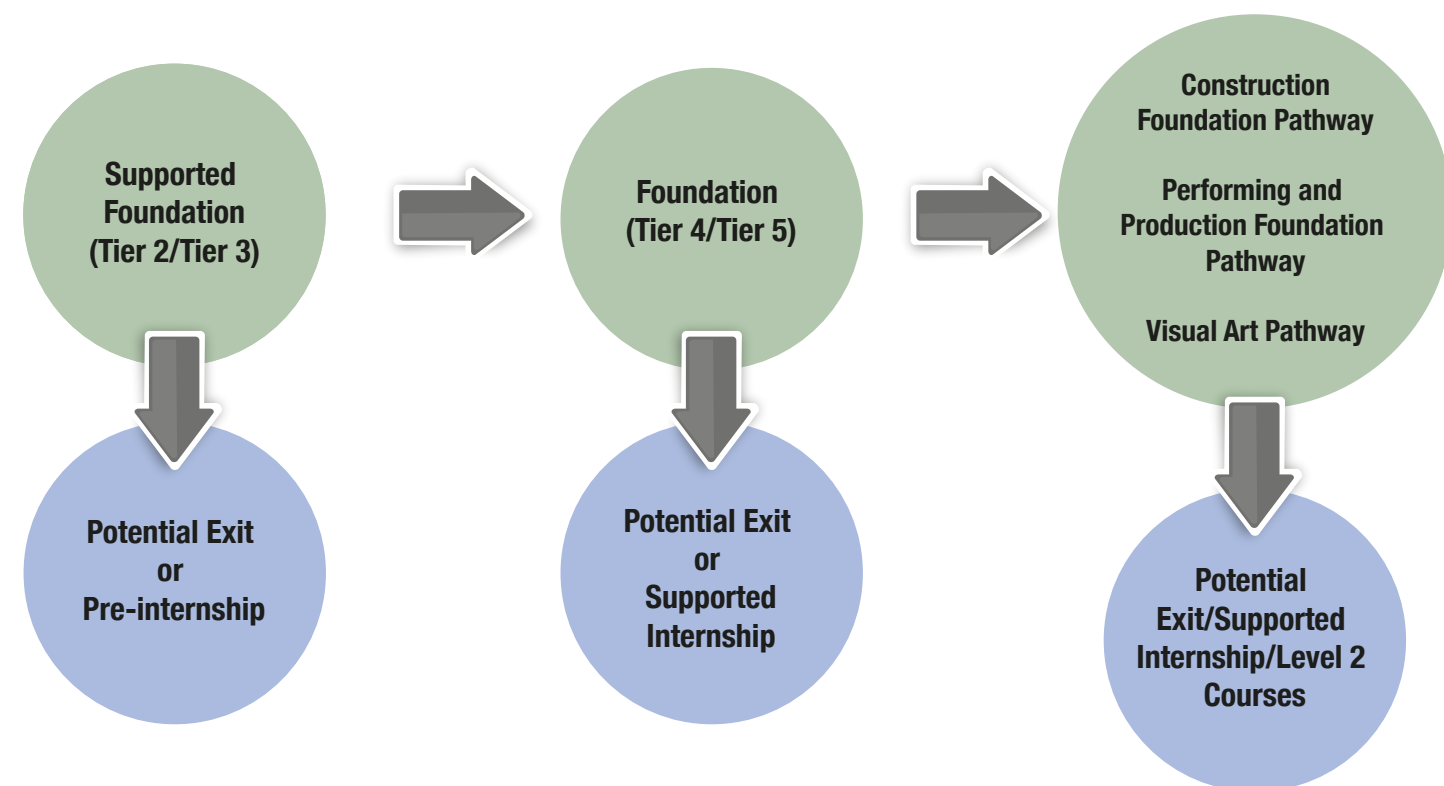
Learners are currently working towards Bronze, Silver and Gold Medallions. This is divided into two parts, wet side and dry side. Learner focus: Water bodies, Sites-Hazards and Risks, Emergency Management, Self-Rescue and Survival skills and Lifesaving Rescue skills. First aid focus: Aftercare, Life Support and CPR for an adult, Child and infant.

3. Creative Learning Pathway

PATHWAY CHOICES

(Learners on the Creative pathway will choose one of the courses below)

Linked Coursers at Bracknell and Wokingham College



Potential Job Roles

Traineeship (may be unpaid) Actor, Singer, Programme Assistant, Sound Operator, Technician
Potential Supported Internship roles within a suitable environment



Performing Arts

The Arts Award Course includes music, dance and drama. During the course your young person will complete projects through a balance of practical skills and theory.

The course develops skills in performing, technical theatre, directing, devising and an understanding a range of jobs in the performing arts industry. Lessons are taught through practical workshops and evidence of their creative development is recorded as a portfolio showing their creative journeys.

This qualification allows your young person to explore the Arts, develop important life skills and gives them an opportunity to achieve a meaningful qualification at the end of the course. The Arts Award inspires young people to grow their arts and leadership talents – it's creative, valuable & accessible.

Outline for year 1

- Autumn Term: Prepare and present Pantomime
- Spring Term: Technical Theatre
- Summer Term: Prepare and present whole school show

Outline for year 2

- Autumn Term: Shakespeare School Festival
- Spring Term: Reading University Project
- Summer Term: Prepare and present whole school show

Other opportunities

- Visits to Arts Centres; for example; South Hill Park
- Theatre Trip Visits
- Developing partnerships with other arts award schools

Accreditation

Exam Board: Arts Award. Trinity College London

Learners will either work towards Arts Award Explore (Entry 3) or Arts Award Bronze (Level 1).

Employability Skills

- Creative thinking
- Leading a team
- Working within a team

OR



Entry Level in Art and Design

This course provides learners with creative and exciting opportunities to begin their exploration of Art and Design. Units include: Graphic design, Painting and drawing, Photography, Printmaking, 3D studies, Textiles.

Accreditation

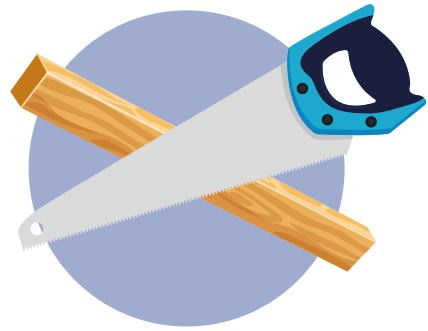
Exam Board: WJEC

Creative, Media and Performance Arts - Learners can achieve either Entry 2 or Entry 3 depending on ability.

Employability Skills

- Creative thinking

AND



Entry Design Technology

Learners will have the opportunity to follow the creative design process to design and make a product in response to a derived or given brief and specification criteria.

Accreditation

Exam board: WJEC

Creative, Media and Performance Arts - Learners can achieve either Entry 2 or Entry 3 depending on ability.

Employability Skills

- Creative thinking
- Problem solving

Learners on this Pathway will also take BTEC Level 1 Construction Award taught by an external company.

Enrichment

All Learners on the Creative Learning Pathway will take;



Pottery

Learners will be working through a creative design process to make clay products. Learners will link with local Arts Centre South Hill Park throughout this course.

Accreditation

Exam board: WJEC

Creative, Media and Performance Arts - Learners can achieve either Entry 2 or Entry 3 depending on ability.

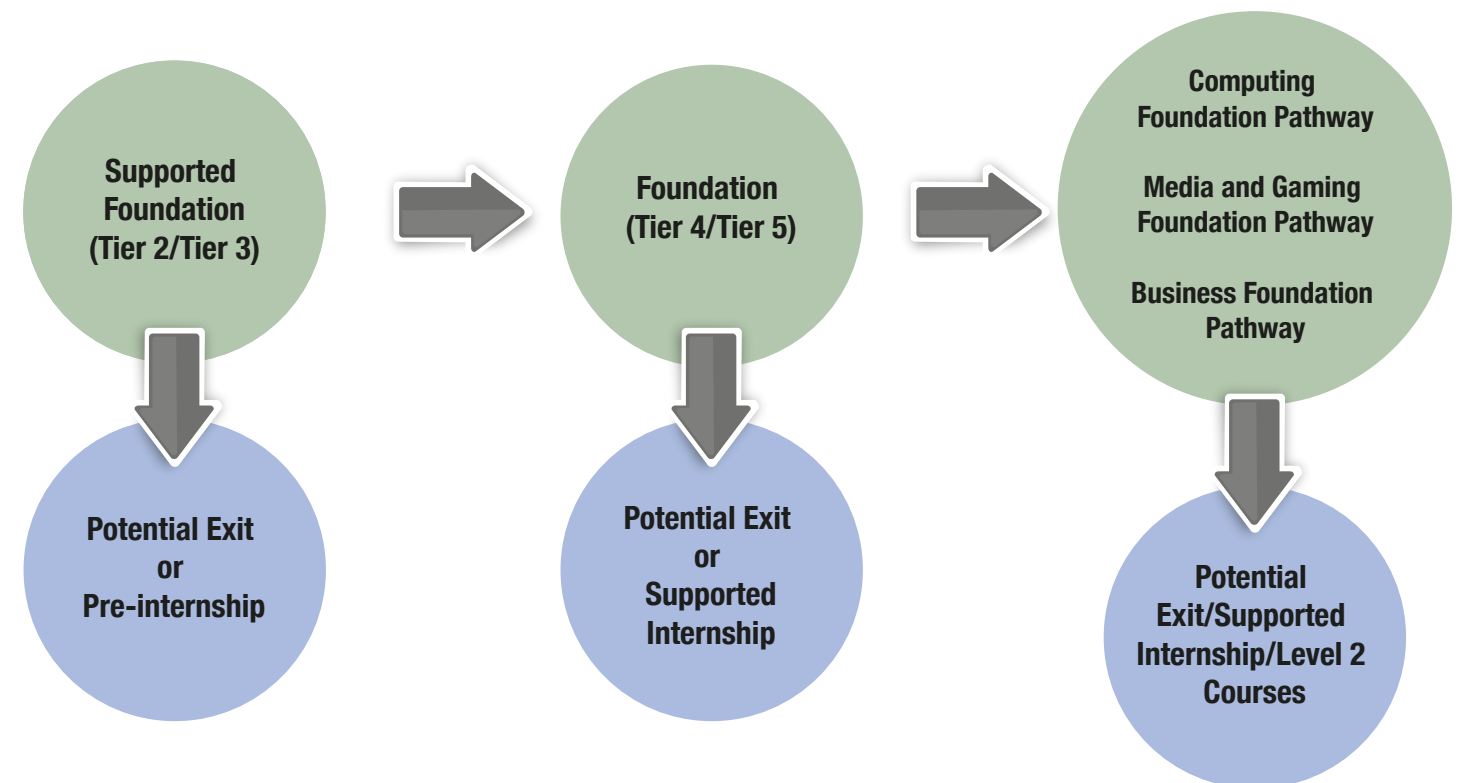
Employability Skills

- Creative thinking
- Problem solving
- Time management

4. ICT Pathway

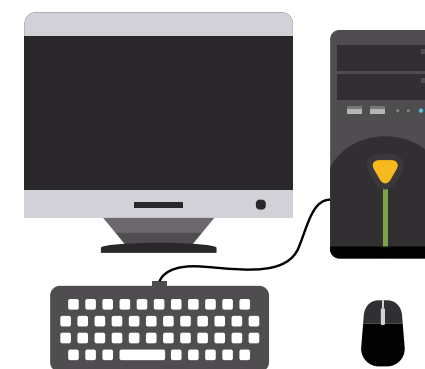
PATHWAY CHOICES

Linked College Courses at Bracknell and Wokingham College



Potential Job Roles

Traineeship (may be unpaid) Jnr Office and Customer Service Roles, Assistant ICT Help Desk
Potential Supported Internship roles within an office environment



Creative Media Production

The creative media sector is fast growing and dynamic. Working in the Creative Media industry involves a wide range of practical processes, skills and techniques – from broadcast media to increasingly interactive products and platforms. Your young person will explore different media products, develop digital media production skills and create a media product.

Accreditation

Exam Board: Edexcel

BTEC Creative Media Production – Level 1

Exam Board: WJEC

Creative, Media and Performing Arts - Learners can achieve either Entry 2 or Entry 3 depending on ability.

Employability Skills

- Computer skills
- Creative thinking
- Problem solving

Enrichment

AND either;



Duke of Edinburgh

The programme runs on a two year cycle and covers different sections each year.

To achieve the Duke of Edinburgh Award, young people must complete four sections:

Volunteering: making a difference to the local community by clearing rubbish and planting trees;

Physical: achieving greater physical fitness through participation in sport;

Skill: developing practical and social skills and personal interests

Expedition: working as a team, carrying clothing and equipment for two days (Bronze).

Accreditation

Duke of Edinburgh Award Bronze

Employability Skills

- Leading a team
- Working within a team
- Problem solving
- Communicating with others

OR



Prince's Trust

Prince's Trust

This year, Prince's Trust has launched the Achieve Programme.

This new programme offers that extra little bit of support to prepare our young people for the world of work. In addition to supporting young people to succeed, Achieve creates a stepping stone to embedding Literacy, Language and Numeracy.

The Achieve programme is uniquely designed to help young people engage with education, using a flexible modular structure. Our young people get the opportunity to take part in a network of corporate partners and engaging workshops.

Achievement

- Opportunity to undertake a robust qualification in Personal Development and Employability skills.
- Emphasis on careers and preparation for work.

Support

- Safe, informal environment to build positive relationships.
- Clear resources to meet our young people's needs.

Flexibility

- Tailored curriculum relevant to young person's needs.
- A wide range of topics.

Personal Development

- Opportunity to develop personal and interpersonal skills.
- Young people are encouraged to make decisions and lead activities.

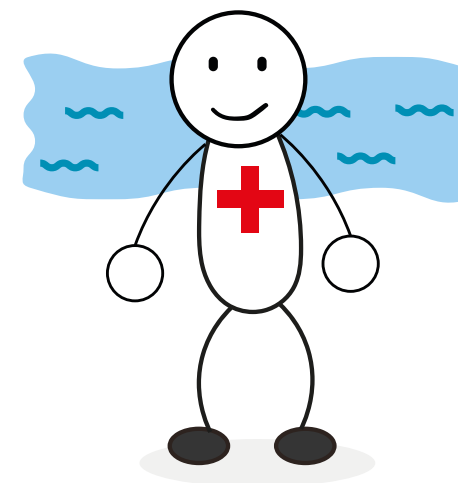
Accreditation

Exam Board: Princes Trust

Through the Achieve programme, young people will produce a portfolio of evidence to show that they have met the criteria for the qualification.

Qualifications are at different levels. (Entry Level 3, Level 1, Level 2) and sizes (Award, Certificate, Diploma).

AND



Life Saving and Life Support

The Lifesaving programme has been developed by the RLSS. The programme we are working towards is 'The Survive and Save' programme.


Students choosing the lifesaving option will learn key life skills including the importance of safe practice around water; from baths, paddling pools and swimming pools to rivers and seas. Students will improve their technical swimming ability and stamina in the water.

These developed skills could lead to the opportunity to participate in other water based sports. For example, some of our current students have recently achieved the PADI Level One Scuba Diving qualification.

Learners are currently working towards Bronze, Silver and Gold Medallions. This is divided into two parts, wet side and dry side.

Learner focus: Water bodies, Sites-Hazards and Risks, Emergency Management, Self-Rescue and Survival skills and Lifesaving Rescue skills.

First aid focus: Aftercare, Life Support and CPR for an adult, Child and infant.



**Kennel Lane School,
Kennel Lane
Bracknell,
Berkshire,
RG42 2EX**

**01344 483872
secretary@kennellaneschool.com**

